

# Building Autonomous Agent Ecosystems

Moving beyond chatbots to self-healing production systems — infrastructure that performs at scale and survives production.

# Snapshot Metrics

Live Systems

4 production systems running

Content Cost Saved

80% reduction

Margin Protected

30% protected

RAG Latency

<200ms



# Systems Built



01 —  
NexusHunt  
Agent

Explorer · Sales AI



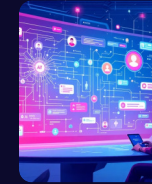
02 —  
BrandNexus  
AI

Communicator ·  
Brand AI



03 —  
MarginMind  
AI

Governor ·  
Commerce AI



04 —  
AdaptiveMind  
AI

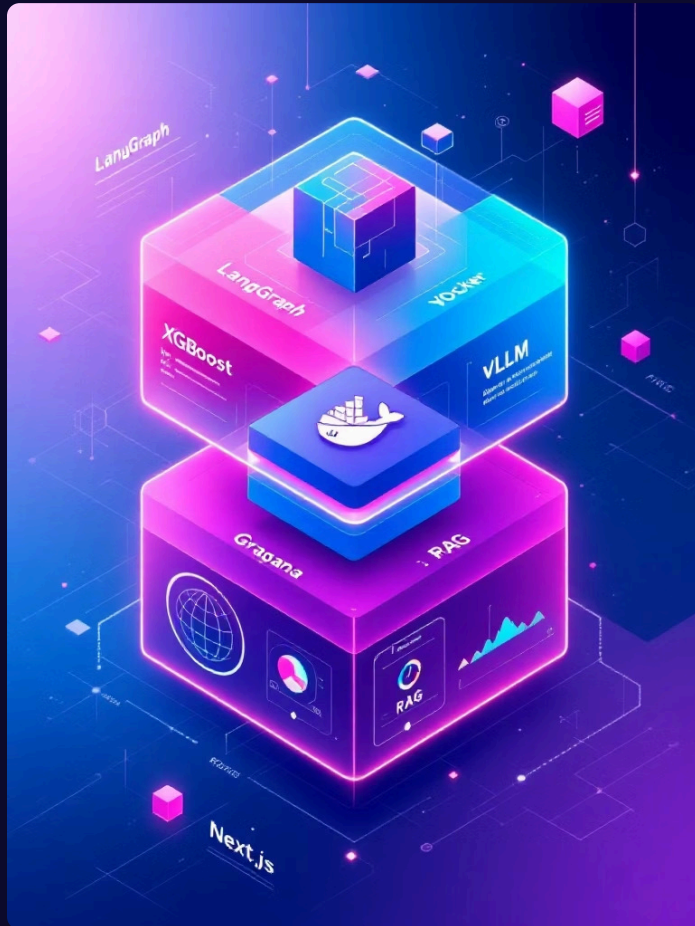
Mentor · Learning  
AI

# What Gets Built

- Agentic Workflows  
Multi-agent swarms using LangGraph — orchestrated, self-healing, safe.
- Predictive Guardrails  
XGBoost + Evidently AI protecting margins and triggering auto-retrains.
- Full MLOps Stack  
Docker · vLLM · Prometheus · GitHub Actions — containerized end-to-end.



# Core Stack



LangGraph

Docker

XGBoost

Evidently AI

vLLM · Grafana · RAG ·  
Next.js

# NexusHunt Agent — The Explorer



---

## Searcher Agent

Web browse · Pattern detect · Tavily API

---

## Analyst Agent

Decision-maker ID · Lead scoring · Filter

---

## Human Gate

Approval checkpoint — production-safe

---

## Writer Agent

Enrich · Validate · Export outreach CSV

**60%** SDR time saved · <60s lead list gen · 4-agent pipeline · 10x SDR replacement

# BrandNexus AI — The Communicator



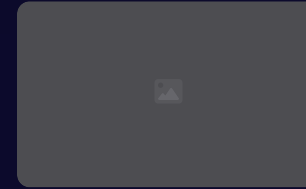
## One Brief → Many Channels

One brief produces five platform-native campaigns with brand voice locked.



## Impact

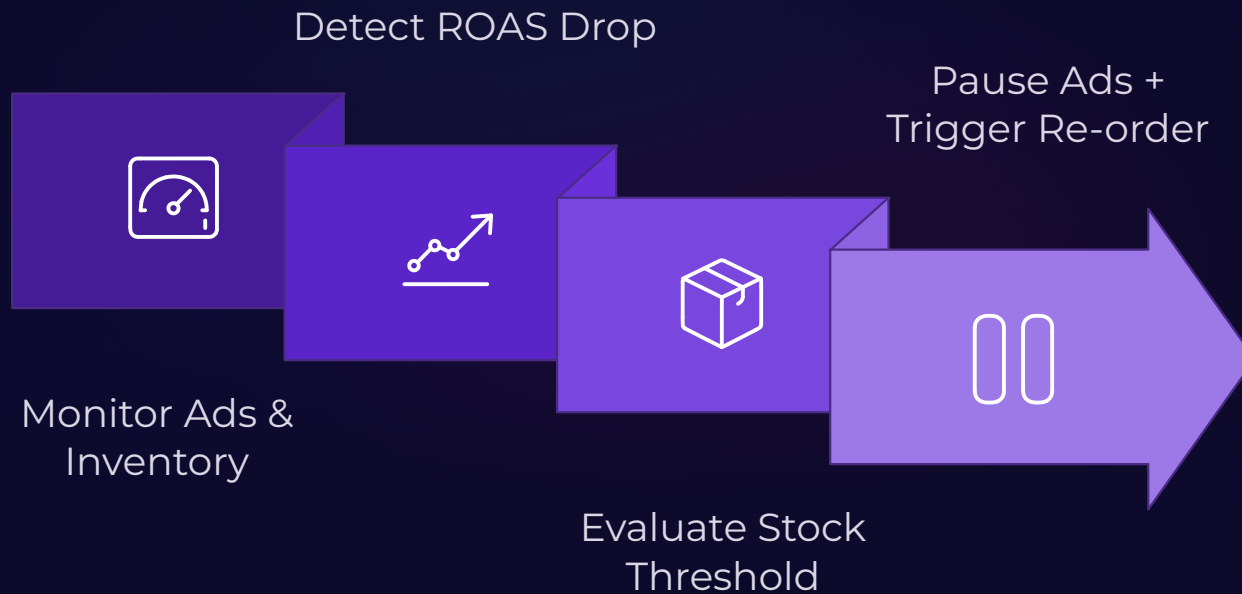
80% cost reduction · 5 channels · 100% brand consistency · Multi-agent swarm



## Safety

Human-in-the-loop review before publish

# MarginMind AI — The Governor



Control loop: IF ROAS drop > 15% AND stock < threshold → PAUSE ADS + TRIGGER RE-ORDER.



## Ads Platforms

Google · Meta · GA4



## D2C / Marketplace

Shopify · Amazon · Flipkart



## Inventory & ERP

CRM · ERP · Stock Data

XGBoost LTV prediction, Evidently AI drift detection, auto budget reallocation.

# AdaptiveMind AI — The Mentor



## Document Ingestion

PDF → Chunks → Embeddings →  
Vector DB



## Hybrid Search

Keyword + Semantic fusion —  
accuracy-first



## BGE Reranker

Top-k refinement —  
accuracy lock on retrieval



## LLM Response

Grounded,  
conversational tutor,  
adaptive



1000+ sessions · <200ms latency · 4-step  
RAG pipeline · Hybrid search.

# Production MLOps & Next Steps



## CI/CD

GitHub Actions → Vercel & Render — automated testing & deploys



## Containerisation

Docker-first across cloud & private VPCs — zero refactor



## Observability

Prometheus + Grafana: latency, tokens, errors, spend



## Drift & Retrain

Evidently AI monitoring → auto-retrain pipelines



FREE AI AUDIT · NO COMMITMENT ·  
HONEST ROI ESTIMATE

Book via WhatsApp: 8010050070

Live Agent Health Dashboard: NexusHunt (Operational), BrandNexus (Operational), MarginMind (Training — Drift Alert), AdaptiveMind (Operational <200ms)